

● FEATURES

1. Low cost & wide range of inductance, Small mounting space required.
2. With low DCR, large current, best for the power supply line.
3. Ideal as a choke coil for noise filtering.

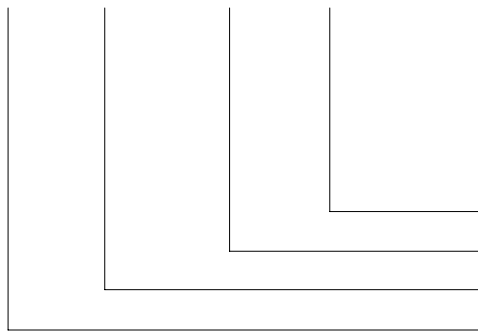


● APPLICATIONS

Power supply for DC-DC converters, TVs, VTRs, computer, home electric appliance, ect.

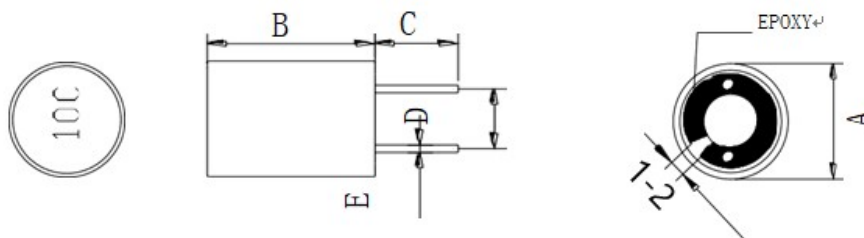
● PART NUMBERING SYSTEM

WTPK 1010- 100 M



Tolerance (J: $\pm 5\%$; K: $\pm 10\%$; M: $\pm 20\%$)
 Inductance (3R3: 3.3 μ H; 100: 10 μ H; 103: 10mH)
 Size Code
 Series Name

● SHAPES AND DIMENSIONS (Unit: m/m)



Series	Dimensions (mm)				
	A Max.	B Max.	C Ref.	D	E Ref.
WTPK1010	11.0	11.0	15	5.0 \pm 0.5	0.65
WTPK1012	11.0	13.0	15	5.0 \pm 0.5	0.65
WTPK1014	11.0	15.0	15	5.0 \pm 0.5	0.65
WTPK1214	13.0	15.0	15	5.0 \pm 0.5	0.80
WTPK1619	16.5	20.5	15	7.5 \pm 1.0	0.80

● SPECIFICATION TABLE:

WTPK1010

Part NO.	L (uH)	Test Freq. MHz	RDC (Ω) max.	IDC (A) max.
WTPK1010-100M	10.0	1KHz/0.25V	0.018	1.00
WTPK1010-150M	15.0	1KHz/0.25V	0.020	0.81
WTPK1010-220M	22.0	1KHz/0.25V	0.025	0.63
WTPK1010-270M	27.0	1KHz/0.25V	0.027	0.50
WTPK1010-330M	33.0	1KHz/0.25V	0.034	0.47
WTPK1010-470M	47.0	1KHz/0.25V	0.047	0.37
WTPK1010-680M	68.0	1KHz/0.25V	0.056	0.29
WTPK1010-101K	100.0	1KHz/0.25V	0.069	0.23
WTPK1010-151K	150.0	1KHz/0.25V	0.095	0.20
WTPK1010-221K	220.0	1KHz/0.25V	0.115	0.16
WTPK1010-271K	270.0	1KHz/0.25V	0.150	0.14
WTPK1010-331K	330.0	1KHz/0.25V	0.195	0.12
WTPK1010-471K	470.0	1KHz/0.25V	0.250	0.10

WTPK1012

Part NO.	L (uH)	Test Freq. MHz	RDC (Ω) max.	IDC (A) max.
WTPK1012-100M	10.0	1KHz/0.25V	0.027	3.30
WTPK1012-150M	15.0	1KHz/0.25V	0.033	2.80
WTPK1012-220M	22.0	1KHz/0.25V	0.045	2.25
WTPK1012-270M	27.0	1KHz/0.25V	0.051	2.00
WTPK1012-330M	33.0	1KHz/0.25V	0.067	1.87
WTPK1012-470M	47.0	1KHz/0.25V	0.085	1.50
WTPK1012-680M	68.0	1KHz/0.25V	0.103	1.28
WTPK1012-101M	100.0	1KHz/0.25V	0.170	1.11
WTPK1012-151M	150.0	1KHz/0.25V	0.210	0.84
WTPK1012-221M	220.0	1KHz/0.25V	0.300	0.72
WTPK1012-271M	270.0	1KHz/0.25V	0.420	0.64
WTPK1012-331K	330.0	1KHz/0.25V	0.475	0.59
WTPK1012-471K	470.0	1KHz/0.25V	0.668	0.50
WTPK1012-681K	680.0	1KHz/0.25V	1.080	0.39
WTPK1012-102K	1000.0	1KHz/0.25V	1.380	0.33

● SPECIFICATION TABLE:

WTPK1014

Part NO.	L (uH)	Test Freq. MHz	RDC (Ω) max.	IDC (A) max.
WTPK1014-100M	10.0	1KHz/0.25V	0.029	4.50
WTPK1014-150M	15.0	1KHz/0.25V	0.040	3.65
WTPK1014-220M	22.0	1KHz/0.25V	0.060	3.20
WTPK1014-270M	27.0	1KHz/0.25V	0.066	2.70
WTPK1014-330M	33.0	1KHz/0.25V	0.070	2.40
WTPK1014-470M	47.0	1KHz/0.25V	0.086	2.10
WTPK1014-680M	68.0	1KHz/0.25V	0.102	1.75
WTPK1014-101M	100.0	1KHz/0.25V	0.158	1.45
WTPK1014-151M	150.0	1KHz/0.25V	0.248	1.18
WTPK1014-221K	220.0	1KHz/0.25V	0.440	0.92
WTPK1014-271K	270.0	1KHz/0.25V	0.488	0.87
WTPK1014-331K	330.0	1KHz/0.25V	0.650	0.80
WTPK1014-471K	470.0	1KHz/0.25V	0.902	0.67
WTPK1014-681K	680.0	1KHz/0.25V	1.330	0.55
WTPK1014-102K	1000.0	1KHz/0.25V	2.050	0.46
WTPK1014-152K	1500.0	1KHz/0.25V	2.500	0.37

WTPK1214

Part NO.	L (uH)	Test Freq. MHz	RDC (Ω) max.	IDC (A) max.
WTPK1214-100M	10.0	1KHz/0.25V	0.015	3.60
WTPK1214-150M	15.0	1KHz/0.25V	0.017	3.20
WTPK1214-220M	22.0	1KHz/0.25V	0.021	2.40
WTPK1214-270M	27.0	1KHz/0.25V	0.023	2.10
WTPK1214-330M	33.0	1KHz/0.25V	0.024	1.80
WTPK1214-470M	47.0	1KHz/0.25V	0.032	1.60
WTPK1214-680M	68.0	1KHz/0.25V	0.060	1.30
WTPK1214-101M	100.0	1KHz/0.25V	0.090	1.10
WTPK1214-151M	150.0	1KHz/0.25V	0.110	0.82
WTPK1214-221M	220.0	1KHz/0.25V	0.140	0.60
WTPK1214-271M	270.0	1KHz/0.25V	0.160	0.54
WTPK1214-331K	330.0	1KHz/0.25V	0.170	0.52
WTPK1214-471K	470.0	1KHz/0.25V	0.350	0.44
WTPK1214-681K	680.0	1KHz/0.25V	0.440	0.38
WTPK1214-102K	1000.0	1KHz/0.25V	0.530	0.27
WTPK1214-152K	1500.0	1KHz/0.25V	0.860	0.23

WT1619

Part NO.	L(uH)	Test Freq. MHz	RDC(Ω) max.	IDC(A) max.
WTPK1619-100M	10.0	1KHz/0.25V	0.030	7.00
WTPK1619-150M	15.0	1KHz/0.25V	0.035	6.50
WTPK1619-220M	22.0	1KHz/0.25V	0.050	5.50
WTPK1619-270M	27.0	1KHz/0.25V	0.055	5.00
WTPK1619-330M	33.0	1KHz/0.25V	0.058	4.50
WTPK1619-470M	47.0	1KHz/0.25V	0.070	4.00
WTPK1619-680M	68.0	1KHz/0.25V	0.100	3.00
WTPK1619-101M	100.0	1KHz/0.25V	0.120	2.50
WTPK1619-151M	150.0	1KHz/0.25V	0.150	2.30
WTPK1619-221M	220.0	1KHz/0.25V	0.250	1.80
WTPK1619-271M	270.0	1KHz/0.25V	0.300	1.70
WTPK1619-331K	330.0	1KHz/0.25V	0.350	1.50
WTPK1619-471K	470.0	1KHz/0.25V	0.450	1.20
WTPK1619-681K	680.0	1KHz/0.25V	0.600	0.90
WTPK1619-102K	1000.0	1KHz/0.25V	1.000	0.60