

## ● FEATURES 特性

Contain high - frequency ferrite, comparatively large rated current. 高频铁氧体

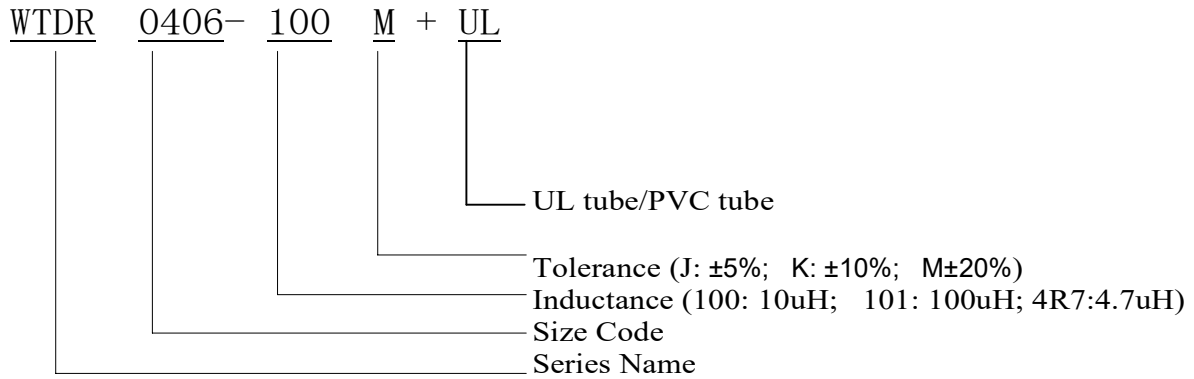
## ● APPLICATIONS 用途

Power supply, DC-DC converters, TVs, VTRs, Computers; computer Peripherals, Telephones, Air-Conditions, Home Electric Appliance, Electronic toys and games.

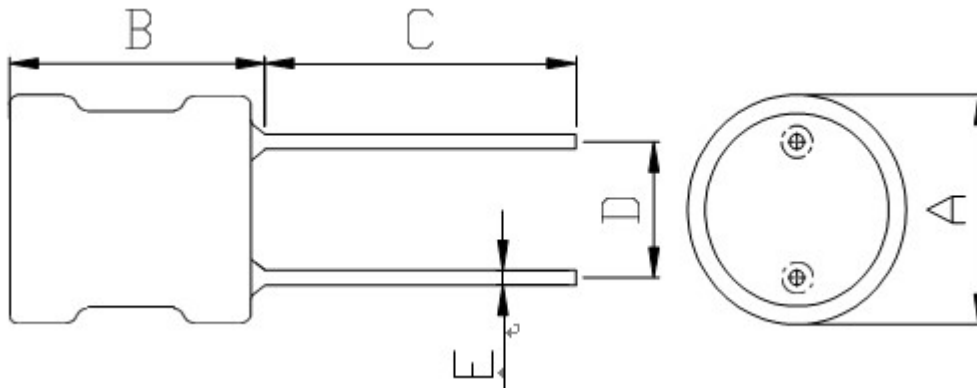
用于电源,DC-DC转换器; 电视机, 录相机, 计算机; 计算机周边设计; 电话机, 空气调节器, 家用电器, 电动玩具等。



## ● PART NUMBERING SYSTEM 品名系列



## ● SHAPES AND DIMENSIONS (Unit: m/m)



Series type	A	B	C	D	E
WTDR0406	6.0Max	9.0Max	15 $\pm$ 2.0	2.0 $\pm$ 0.5	0.48 $\pm$ 0.05
WTDR0507	6.5Max	9.5Max	15 $\pm$ 2.0	2.5 $\pm$ 0.5	0.6 $\pm$ 0.05
WTDR0608	8.0Max	11.0Max	15 $\pm$ 2.0	3.0 $\pm$ 0.5	0.6 $\pm$ 0.05
WTDR0810	11.0Max	13.0Max	15 $\pm$ 2.0	5.0 $\pm$ 0.5	0.6 $\pm$ 0.05
WTDR0912	12.0Max	15.0Max	15 $\pm$ 2.0	5.0 $\pm$ 0.5	0.8 $\pm$ 0.1
WTDR1012	13.0Max	16.0Max	15 $\pm$ 2.0	6.0 $\pm$ 0.5	0.8 $\pm$ 0.1
WTDR1016	13.0Max	20.0Max	15 $\pm$ 2.0	6.0 $\pm$ 0.5	0.8 $\pm$ 0.1
WTDR1216	15.0Max	20.0Max	15 $\pm$ 2.0	7.5 $\pm$ 1.0	0.8 $\pm$ 0.1

## ● SPECIFICATION TABLE

## WTDR0406

Model Name 品名	INDUCTANCE ( $\mu$ H) 电感值	DCR (Max.) ( $\Omega$ ) 直流电阻	Idc (Max.) (A) 额定电流	TEST FREQUENCY 测试频率
WTDR0406-4R7M	4.7	0.120	1.50	100KHz, 0.25V
WTDR0406-5R6M	5.6	0.120	1.20	100KHz, 0.25V
WTDR0406-6R8M	6.8	0.130	1.00	100KHz, 0.25V
WTDR0406-8R2M	8.2	0.140	0.80	100KHz, 0.25V
WTDR0406-100K	10	0.150	0.70	1KHz,0.25V
WTDR0406-120K	12	0.180	0.60	1KHz,0.25V
WTDR0406-150K	15	0.200	0.65	1KHz,0.25V
WTDR0406-180K	18	0.240	0.63	1KHz,0.25V
WTDR0406-220K	22	0.260	0.60	1KHz,0.25V
WTDR0406-270K	27	0.300	0.56	1KHz,0.25V
WTDR0406-330K	33	0.400	0.55	1KHz,0.25V
WTDR0406-390K	39	0.500	0.52	1KHz,0.25V
WTDR0406-470K	47	0.600	0.50	1KHz,0.25V
WTDR0406-560K	56	0.70	0.50	1KHz,0.25V
WTDR0406-680K	68	1.00	0.48	1KHz,0.25V
WTDR0406-820K	82	1.20	0.47	1KHz,0.25V
WTDR0406-101K	100	1.40	0.45	1KHz,0.25V
WTDR0406-121K	120	1.50	0.40	1KHz,0.25V
WTDR0406-151K	150	1.60	0.35	1KHz,0.25V
WTDR0406-181K	180	1.80	0.30	1KHz,0.25V
WTDR0406-221K	220	2.00	0.24	1KHz,0.25V
WTDR0406-271K	270	2.50	0.22	1KHz,0.25V
WTDR0406-331K	330	3.00	0.20	1KHz,0.25V
WTDR0406-391K	390	3.30	0.18	1KHz,0.25V
WTDR0406-471K	470	3.50	0.18	1KHz,0.25V
WTDR0406-561K	560	4.0	0.16	1KHz,0.25V
WTDR0406-681K	680	6.0	0.15	1KHz,0.25V
WTDR0406-821K	820	7.0	0.12	1KHz,0.25V
WTDR0406-102K	1000	9.0	0.10	1KHz,0.25V

**WTDR0507**

Model Name 品名	INDUCTANCE ( $\mu$ H) 电感值	DCR (Max.) ( $\Omega$ ) 直流电阻	Idc (Max.) (A) 额定电流	TEST FREQUENCY 测试频率
WTDR0507-4R7M	4.7	0.050	2.00	100KHz, 0.25V
WTDR0507-6R8M	6.8	0.060	1.80	100KHz, 0.25V
WTDR0507-100K	10	0.080	1.60	1KHz,0.25V
WTDR0507-120K	12	0.10	1.60	1KHz,0.25V
WTDR0507-150K	15	0.14	1.50	1KHz,0.25V
WTDR0507-180K	18	0.15	1.20	1KHz,0.25V
WTDR0507-220K	22	0.16	1.00	1KHz,0.25V
WTDR0507-270K	27	0.20	0.90	1KHz,0.25V
WTDR0507-330K	33	0.30	0.80	1KHz,0.25V
WTDR0507-390K	39	0.40	0.75	1KHz,0.25V
WTDR0507-470K	47	0.45	0.70	1KHz,0.25V
WTDR0507-560K	56	0.50	0.65	1KHz,0.25V
WTDR0507-680K	68	0.55	0.60	1KHz,0.25V
WTDR0507-820K	82	0.60	0.55	1KHz,0.25V
WTDR0507-101K	100	0.80	0.50	1KHz,0.25V
WTDR0507-121K	120	1.00	0.48	1KHz,0.25V
WTDR0507-151K	150	1.50	0.45	1KHz,0.25V
WTDR0507-181K	180	1.80	0.42	1KHz,0.25V
WTDR0507-221K	220	2.00	0.40	1KHz,0.25V
WTDR0507-271K	270	2.30	0.35	1KHz,0.25V
WTDR0507-331K	330	2.60	0.30	1KHz,0.25V
WTDR0507-391K	390	2.80	0.28	1KHz,0.25V
WTDR0507-471K	470	3.00	0.25	1KHz,0.25V
WTDR0507-561K	560	3.50	0.25	1KHz,0.25V
WTDR0507-681K	680	4.50	0.24	1KHz,0.25V
WTDR0507-821K	820	5.0	0.20	1KHz,0.25V
WTDR0507-102K	1000	6.0	0.18	1KHz,0.25V
WTDR0507-122K	1200	8	0.16	1KHz,0.25V
WTDR0507-152K	1500	9	0.15	1KHz,0.25V
WTDR0507-182K	1800	10	0.14	1KHz,0.25V
WTDR0507-222K	2200	12	0.10	1KHz,0.25V
WTDR0507-272K	2700	16	0.09	1KHz,0.25V
WTDR0507-332K	3300	20	0.08	1KHz,0.25V
WTDR0507-392K	3900	24	0.07	1KHz,0.25V
WTDR0507-472K	4700	26	0.060	1KHz,0.25V
WTDR0507-562K	5600	28	0.055	1KHz,0.25V
WTDR0507-682K	6800	30	0.050	1KHz,0.25V
WTDR0507-822K	8200	40	0.045	1KHz,0.25V

**WTDR0608**

Model Name 品名	INDUCTANCE ( $\mu$ H) 电感值	DCR (Max.) ( $\Omega$ ) 直流电阻	Idc (Max.) (A) 额定电流	TEST FREQUENCY 测试频率
WTDR0608-2R2M	2.2	0.013	4.00	1KHz,0.25V
WTDR0608-3R3M	3.3	0.016	3.50	1KHz,0.25V
WTDR0608-4R7M	4.7	0.020	3.00	1KHz,0.25V
WTDR0608-6R8M	6.8	0.022	2.50	1KHz,0.25V
WTDR0608-100M	10	0.039	2.00	1KHz,0.25V
WTDR0608-120M	12	0.10	1.90	1KHz,0.25V
WTDR0608-150M	15	0.11	1.80	1KHz,0.25V
WTDR0608-180M	18	0.12	1.60	1KHz,0.25V
WTDR0608-220K	22	0.12	1.50	1KHz,0.25V
WTDR0608-270K	27	0.17	1.20	1KHz,0.25V
WTDR0608-330K	33	0.19	1.00	1KHz,0.25V
WTDR0608-390K	39	0.22	0.95	1KHz,0.25V
WTDR0608-470K	47	0.23	0.90	1KHz,0.25V
WTDR0608-560K	56	0.29	0.85	1KHz,0.25V
WTDR0608-680K	68	0.37	0.80	1KHz,0.25V
WTDR0608-820K	82	0.39	0.75	1KHz,0.25V
WTDR0608-101K	100	0.44	0.70	1KHz,0.25V
WTDR0608-121K	120	0.64	0.65	1KHz,0.25V
WTDR0608-151K	150	0.73	0.60	1KHz,0.25V
WTDR0608-181K	180	0.82	0.55	1KHz,0.25V
WTDR0608-221K	220	0.92	0.50	1KHz,0.25V
WTDR0608-271K	270	1.3	0.45	1KHz,0.25V
WTDR0608-331K	330	1.5	0.40	1KHz,0.25V
WTDR0608-391K	390	1.8	0.35	1KHz,0.25V
WTDR0608-471K	470	2.3	0.30	1KHz,0.25V
WTDR0608-561K	560	3.0	0.28	1KHz,0.25V
WTDR0608-681K	680	3.25	0.25	1KHz,0.25V
WTDR0608-821K	820	4.16	0.23	1KHz,0.25V
WTDR0608-102K	1000	5.00	0.21	1KHz,0.25V
WTDR0608-122K	1200	6.50	0.20	1KHz,0.25V
WTDR0608-152K	1500	8.00	0.17	1KHz,0.25V
WTDR0608-182K	1800	9.00	0.16	1KHz,0.25V
WTDR0608-222K	2200	9.50	0.14	1KHz,0.25V

## WTDR0810

Model Name 品名	INDUCTANCE ( $\mu$ H) 电感值	DCR (Max.) ( $\Omega$ ) 直流电阻	Idc (Max.) (A) 额定电流	TEST FREQUENCY 测试频率
WTDR0810-3R3M	3.3	0.04	4.20	100KHz,0.25V
WTDR0810-3R9M	3.9	0.05	4.20	100KHz,0.25V
WTDR0810-4R7M	4.7	0.06	4.00	100KHz,0.25V
WTDR0810-6R8M	6.8	0.06	3.80	100KHz,0.25V
WTDR0810-8R2M	8.2	0.06	3.60	100KHz,0.25V
WTDR0810-100K	10	0.07	3.50	1KHz,0.25V
WTDR0810-120K	12	0.08	3.20	1KHz,0.25V
WTDR0810-150K	15	0.09	3.00	1KHz,0.25V
WTDR0810-180K	18	0.10	2.80	1KHz,0.25V
WTDR0810-220K	22	0.12	2.50	1KHz,0.25V
WTDR0810-270K	27	0.14	2.20	1KHz,0.25V
WTDR0810-330K	33	0.16	2.00	1KHz,0.25V
WTDR0810-390K	39	0.16	1.80	1KHz,0.25V
WTDR0810-470K	47	0.18	1.50	1KHz,0.25V
WTDR0810-560K	56	0.20	1.40	1KHz,0.25V
WTDR0810-680K	68	0.23	1.30	1KHz,0.25V
WTDR0810-820K	82	0.27	1.20	1KHz,0.25V
WTDR0810-101K	100	0.30	1.20	1KHz,0.25V
WTDR0810-121K	120	0.33	1.00	1KHz,0.25V
WTDR0810-151K	150	0.46	0.80	1KHz,0.25V
WTDR0810-181K	180	0.51	0.60	1KHz,0.25V
WTDR0810-221K	220	0.62	0.55	1KHz,0.25V
WTDR0810-271K	270	0.65	0.45	1KHz,0.25V
WTDR0810-331K	330	0.79	0.40	1KHz,0.25V
WTDR0810-391K	390	0.91	0.40	1KHz,0.25V
WTDR0810-471K	470	1.1	0.35	1KHz,0.25V
WTDR0810-561K	560	1.2	0.30	1KHz,0.25V
WTDR0810-681K	680	1.5	0.28	1KHz,0.25V
WTDR0810-821K	820	1.7	0.25	1KHz,0.25V
WTDR0810-102K	1000	2.0	0.22	1KHz,0.25V
WTDR0810-122K	1200	2.5	0.20	1KHz,0.25V
WTDR0810-152K	1500	2.9	0.18	1KHz,0.25V
WTDR0810-182K	1800	3.5	0.15	1KHz,0.25V
WTDR0810-222K	2200	4.2	0.14	1KHz,0.25V
WTDR0810-272K	2700	5.1	0.13	1KHz,0.25V
WTDR0810-332K	3300	6.1	0.12	1KHz,0.25V
WTDR0810-392K	3900	7.8	0.11	1KHz,0.25V
WTDR0810-472K	4700	8.0	0.100	1KHz,0.25V
WTDR0810-562K	5600	10.0	0.095	1KHz,0.25V
WTDR0810-682K	6800	14.0	0.090	1KHz,0.25V
WTDR0810-822K	8200	15.0	0.085	1KHz,0.25V
WTDR0810-103K	10000	20.0	0.080	1KHz,0.25V

**WTDR0912**

PART NUMBER 品名	INDUCTANCE ( $\mu$ H) 电感值	DCR (Max.) ( $\Omega$ ) 直流电阻	Idc (Max.) (A) 额定电流	TEST FREQUENCY 测试频率
WTDR0912-100K	10	0.04	4.00	1KHz,0.25V
WTDR0912-120K	12	0.045	3.80	1KHz,0.25V
WTDR0912-150K	15	0.05	3.50	1KHz,0.25V
WTDR0912-180K	18	0.06	3.20	1KHz,0.25V
WTDR0912-220K	22	0.07	3.00	1KHz,0.25V
WTDR0912-270K	27	0.10	2.80	1KHz,0.25V
WTDR0912-330K	33	0.12	2.50	1KHz,0.25V
WTDR0912-390K	39	0.12	2.00	1KHz,0.25V
WTDR0912-470K	47	0.13	1.90	1KHz,0.25V
WTDR0912-560K	56	0.14	1.80	1KHz,0.25V
WTDR0912-680K	68	0.15	1.70	1KHz,0.25V
WTDR0912-820K	82	0.16	1.60	1KHz,0.25V
WTDR0912-101K	100	0.25	1.50	1KHz,0.25V
WTDR0912-121K	120	0.28	1.20	1KHz,0.25V
WTDR0912-151K	150	0.30	1.00	1KHz,0.25V
WTDR0912-181K	180	0.45	0.70	1KHz,0.25V
WTDR0912-221K	220	0.50	0.60	1KHz,0.25V
WTDR0912-271K	270	0.65	0.50	1KHz,0.25V
WTDR0912-331K	330	0.85	0.45	1KHz,0.25V
WTDR0912-391K	390	0.95	0.40	1KHz,0.25V
WTDR0912-471K	470	1.1	0.35	1KHz,0.25V
WTDR0912-561K	560	1.2	0.30	1KHz,0.25V
WTDR0912-681K	680	1.3	0.25	1KHz,0.25V
WTDR0912-821K	820	1.5	0.20	1KHz,0.25V
WTDR0912-102K	1000	2.0	0.20	1KHz,0.25V
WTDR0912-122K	1200	2.3	0.18	1KHz,0.25V
WTDR0912-152K	1500	2.9	0.17	1KHz,0.25V
WTDR0912-182K	1800	3.3	0.16	1KHz,0.25V
WTDR0912-222K	2200	4.5	0.15	1KHz,0.25V
WTDR0912-332K	3300	5.7	0.13	1KHz,0.25V
WTDR0912-472K	4700	7.2	0.12	1KHz,0.25V
WTDR0912-682K	6800	12	0.10	1KHz,0.25V
WTDR0912-103K	10000	16	0.09	1KHz,0.25V
WTDR0912-123K	12000	18	0.09	1KHz,0.25V
WTDR0912-153K	15000	21	0.08	1KHz,0.25V
WTDR0912-183K	18000	25	0.08	1KHz,0.25V
WTDR0912-223K	22000	33	0.07	1KHz,0.25V
WTDR0912-333K	33000	45	0.04	1KHz,0.25V

**WTDR1012**

PART NUMBER 品名	INDUCTANCE ( $\mu$ H) 电感值	DCR (Max.) ( $\Omega$ ) 直流电阻	Idc (Max.) (A) 额定电流	TEST FREQUENCY 测试频率
WTDR1012-3R3M	3.3	0.025	5.5	100KHz,0.45V
WTDR1012-3R9M	3.9	0.030	5.0	100KHz,0.45V
WTDR1012-4R7M	4.7	0.030	5.0	100KHz,0.45V
WTDR1012-5R6M	5.6	0.040	4.8	100KHz,0.45V
WTDR1012-6R8M	6.8	0.040	4.8	100KHz,0.45V
WTDR1012-8R2M	8.2	0.045	4.5	100KHz,0.45V
WTDR1012-100K	10	0.050	4.2	1KHz,0.45V
WTDR1012-120K	12	0.050	4.0	1KHz,0.45V
WTDR1012-150K	15	0.060	3.8	1KHz,0.45V
WTDR1012-180K	18	0.070	3.8	1KHz,0.45V
WTDR1012-220K	22	0.080	3.5	1KHz,0.45V
WTDR1012-270K	27	0.090	3.2	1KHz,0.45V
WTDR1012-330K	33	0.100	3.0	1KHz,0.45V
WTDR1012-390K	39	0.120	2.5	1KHz,0.45V
WTDR1012-470K	47	0.120	2.0	1KHz,0.45V
WTDR1012-560K	56	0.140	1.8	1KHz,0.45V
WTDR1012-680K	68	0.150	1.7	1KHz,0.45V
WTDR1012-820K	82	0.160	1.6	1KHz,0.45V
WTDR1012-101K	100	0.180	1.5	1KHz,0.45V
WTDR1012-121K	120	0.200	1.4	1KHz,0.45V
WTDR1012-151K	150	0.250	1.2	1KHz,0.45V
WTDR1012-181K	180	0.280	1.0	1KHz,0.45V
WTDR1012-221K	220	0.300	0.90	1KHz,0.45V
WTDR1012-271K	270	0.420	0.80	1KHz,0.45V
WTDR1012-331K	330	0.550	0.70	1KHz,0.45V
WTDR1012-391K	390	0.600	0.60	1KHz,0.45V
WTDR1012-471K	470	0.650	0.55	1KHz,0.45V
WTDR1012-561K	560	0.750	0.50	1KHz,0.45V
WTDR1012-681K	680	0.850	0.50	1KHz,0.45V
WTDR1012-821K	820	1.100	0.40	1KHz,0.45V
WTDR1012-102K	1000	1.400	0.30	1KHz,0.45V

**WTDR1016**

PART NUMBER 品名	INDUCTANCE ( $\mu$ H) 电感值	DCR (Max.) ( $\Omega$ ) 直流电阻	Idc (Max.) (A) 额定电流	TEST FREQUENCY 测试频率
WTDR1016-4R7M	4.7	0.020	5.8	100KHz,0.25V
WTDR1016-5R6M	5.6	0.025	5.5	100KHz,0.25V
WTDR1016-6R8M	6.8	0.025	5.4	100KHz,0.25V
WTDR1016-8R2M	8.2	0.028	5.2	100KHz,0.25V
WTDR1016-100K	10	0.035	5.0	1KHz,0.25V
WTDR1016-120K	12	0.035	4.5	1KHz,0.25V
WTDR1016-150K	15	0.040	4.0	1KHz,0.25V
WTDR1016-180K	18	0.060	4.0	1KHz,0.25V
WTDR1016-220K	22	0.080	3.8	1KHz,0.25V
WTDR1016-270K	27	0.100	3.5	1KHz,0.25V
WTDR1016-330K	33	0.100	3.5	1KHz,0.25V
WTDR1016-390K	39	0.120	3.2	1KHz,0.25V
WTDR1016-470K	47	0.120	3.0	1KHz,0.25V
WTDR1016-560K	56	0.130	2.8	1KHz,0.25V
WTDR1016-680K	68	0.140	2.5	1KHz,0.25V
WTDR1016-820K	82	0.150	2.2	1KHz,0.25V
WTDR1016-101K	100	0.180	2.0	1KHz,0.25V
WTDR1016-121K	120	0.200	1.8	1KHz,0.25V
WTDR1016-151K	150	0.220	1.6	1KHz,0.25V
WTDR1016-181K	180	0.250	1.5	1KHz,0.25V
WTDR1016-221K	220	0.300	1.5	1KHz,0.25V
WTDR1016-271K	270	0.350	1.4	1KHz,0.25V
WTDR1016-331K	330	0.600	1.3	1KHz,0.25V
WTDR1016-391K	390	0.700	1.2	1KHz,0.25V
WTDR1016-471K	470	0.800	1.0	1KHz,0.25V
WTDR1016-561K	560	0.900	1.0	1KHz,0.25V
WTDR1016-681K	680	1.000	0.9	1KHz,0.25V
WTDR1016-821K	820	1.200	0.8	1KHz,0.25V
WTDR1016-102K	1000	1.500	0.7	1KHz,0.25V



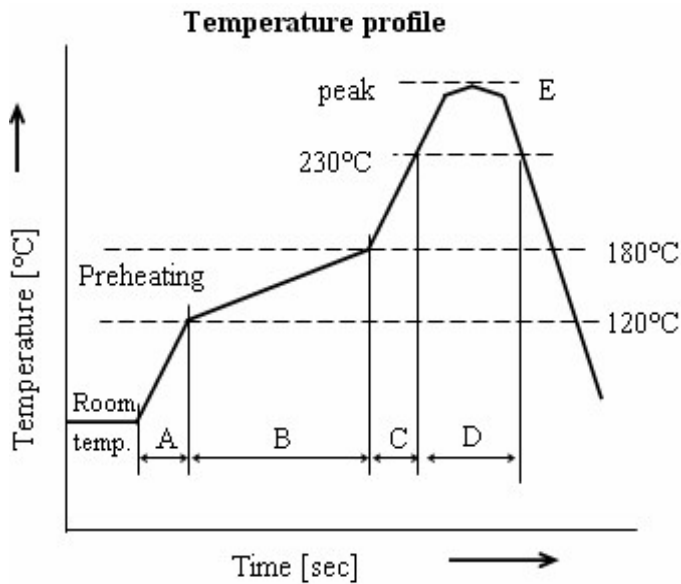
**WTDR1216**

PART NUMBER 品名	INDUCTANCE ( $\mu$ H) 电感值	DCR (Max.) ( $\Omega$ ) 直流电阻	Idc (Max.) (A) 额定电流	TEST FREQUENCY 测试频率
WTDR1216-330K	33	0.08	5.0	1KHz,0.25V
WTDR1216-390K	39	0.10	4.5	1KHz,0.25V
WTDR1216-470K	47	0.11	4.2	1KHz,0.25V
WTDR1216-560K	56	0.12	4.0	1KHz,0.25V
WTDR1216-680K	68	0.13	3.5	1KHz,0.25V
WTDR1216-820K	82	0.14	3.3	1KHz,0.25V
WTDR1216-101K	100	0.15	3.2	1KHz,0.25V
WTDR1216-121K	120	0.16	3.0	1KHz,0.25V
WTDR1216151K	150	0.17	2.7	1KHz,0.25V
WTDR1216181K	180	0.18	2.5	1KHz,0.25V
WTDR1216-221K	220	0.20	2.3	1KHz,0.25V
WTDR1216-271K	270	0.30	2.0	1KHz,0.25V
WTDR1216-331K	330	0.40	1.9	1KHz,0.25V
WTDR1216-391K	390	0.50	1.8	1KHz,0.25V
WTDR1216-471K	470	0.60	1.7	1KHz,0.25V
WTDR1216-561K	560	0.70	1.6	1KHz,0.25V
WTDR1216-681K	680	0.80	1.5	1KHz,0.25V
WTDR1216-821K	820	0.90	1.4	1KHz,0.25V
WTDR1216-102K	1000	1.00	1.3	1KHz,0.25V
WTDR1216-152K	1500	1.50	1.0	1KHz,0.25V
WTDR1216-182K	1800	2.00	0.8	1KHz,0.25V
WTDR1216-222K	2200	3.00	0.7	1KHz,0.25V
WTDR1216-272K	2700	4.50	0.6	1KHz,0.25V
WTDR1216-332K	3300	6.00	0.5	1KHz,0.25V

● Soldering 焊接

1. Reflow Soldering 回流焊

Remark: Radial type choke inductor fixed inductor is not suitable for reflow soldering. 注意：工字电感不适用于回流



A	Temp. rise gradient	1~5 °C/sec
B	Heating time	50~150 sec
	Heating temperature	120~180 °C
C	Temp. rise gradient	1~5 °C/sec
D	Time over 230°C	70 sec
E	Peak temperature	260 °C
	Peak-temp. hold time	Momentary

2. Flow(Wave) Soldering 波峰焊

Peak temperature	≤260°C
Dipping time	5 sec
Soldering	2 times

SMD: Dipping the entire component

Component for Insertion :Dipping to the lead joint of componen

3. Hand Soldering/Touchup 手工焊/修补

Soldering iron tip temperature	≤350°C
Soldering time	≤3 sec
Soldering	2 times

### ● Radial type choke inductor's Reliability Testing Items 产品可靠性测试项目

#### STANDARD TESTING CONDITIONS:

UNLESS OTHERWISE SPECIFIED, THE STANDARD RANGE OF ATMOSPHERIC CONDITIONS FOR MEASUREMENTS AND TESTS ARE AS FOLLOWS: AMBIENT TEMPERATURE: 15°C ~ 35°C. RELATIVE HUMIDITY: 25% ~ 85%. AIR PRESSURE: 86kPa ~ 106kPa.

依照下表测试方法进行实验测试。产品测试地方的室温：15°C ~ 35°C，湿度：25% ~ 85%，大气压：86kPa ~ 106kPa。

版本：A1

NO.	Items 项目	Test Methods 测试方法	Requirements 要求
1	Lead terminal strength 端子强度试验	A static pulling force of 5N in a direction parallel to the lead terminals for 60±5 seconds. 施加推拉力5牛顿，时间为60s±5s。	No terminal breakage or loosening. 未出现端子损坏或脱落现象
2	Resistance to soldering heat test 耐焊性试验	Fix the samples on a 1.6mm thickness PCB, then dip the sample leads into a soldering bath of 270±5°C up to the PCB for 5±1 seconds. 将产品固定在1.6mm的PCB板上，放入锡炉中，温度为270±5°C，时间为5±1s。	No significant abnormality in appearance. Deviation relative to initial value: L: Within ±10% 外观无明显损坏。变化范围： 电感值在 ±10%内
3	Solder ability test 可焊性试验	Immerse the terminal in flux for 5 seconds. Then dip the terminal into a soldering bath of 245±5°C for 2±0.5 seconds. 端子浸入助焊剂5s，然后将端子放入锡炉中，温度为245±5°C，时间为2±0.5s。	At least 90% of terminal electrode is covered by new solder. 端子表面有90%以上着锡。
4	Humidity test 湿度试验	Temperature 试验温度: 40°C ± 2°C Humidity 试验湿度: 90% ~ 95%RH Duration 持续时间: 96 ± 4 Hours	No significant abnormality in appearance. Deviation relative to initial value: L: Within ±10% 外观无明显损坏。变化范围： 电感值在 ±10%内
5	High temperature storage test 高温储存试验	Temperature 试验温度: 85°C ± 2°C Duration 持续时间: 96 ± 4 Hours	
6	Low temperature storage test 低温储存试验	Temperature 试验温度: -25°C ± 2°C Time 持续时间: 96 ± 4 Hours	
7	Thermal shock test 冷热冲击试验	First -25±5°C for 30±3 minutes, last 85±5°C 30±3 minutes as 1 cycles. Go through 10 cycles. 首先从-25±5°C作用30±3分钟，然后温度冲击到85±5°C作用30±3分钟，作为一个循环，共做10个循环。	